

BACnet Router (CBR) Firmware 3.06.04

Issue Date: May 06, 2016

Product: CBR, CBR/MOD

Product Version: 3.06.04

Summary

The configuration/status pages in the **CBR** embedded web interface have been updated to provide additional user feedback for MS/TP traffic and Modbus communication. In addition, issues with operating on large BACnet networks and Modbus device reading errors have been resolved.

Background

This is a scheduled continuous-improvement release.

Installation





Firmware upgrade is carried out via IP (over the network connection). This allows CBR to be upgraded remotely. A utility is included to enable upgrading from a Windows PC.

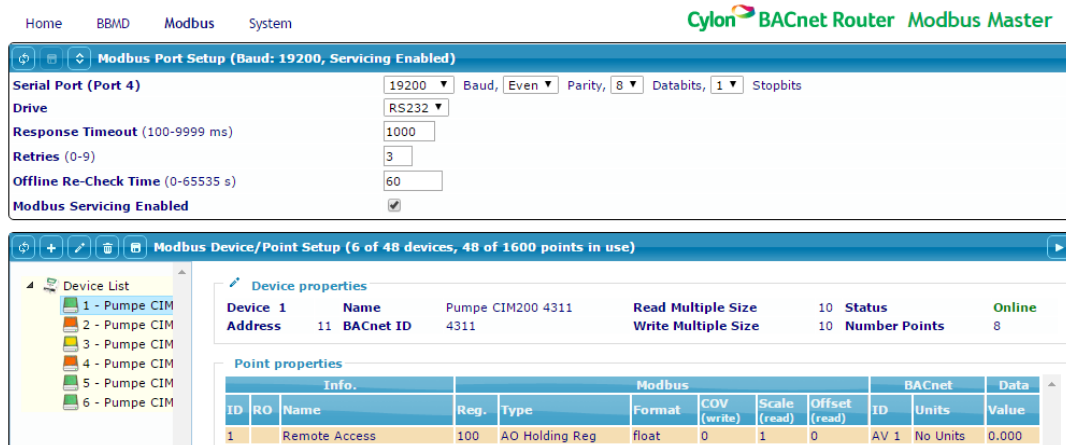
1. Download the file **CBR Firmware 3.06.04.zip** from toolbox.aamatrix.com
2. Unzip the downloaded file, and run the .exe that is extracted. Follow the on-screen instructions to install the firmware upgrade utility on your PC.
3. From the Windows Start Menu, select "UC32.net Upgrade - n.nn.nn" to start the utility, and specify the Comms Controller to be upgraded.
4. If for some reason (e.g. a power fail during a Flash Upgrade) the CBR fails to save the Flash Upgrade, you must power cycle the controller and restart the upgrade process.

Features & Improvements

Improvements

B8208 The Modbus embedded web interface has been updated to indicate when there is a read from or write to the Modbus device

 (green)	Modbus device online
 (red)	Modbus device offline
 (yellow)	Modbus device read
 (orange)	Modbus device write

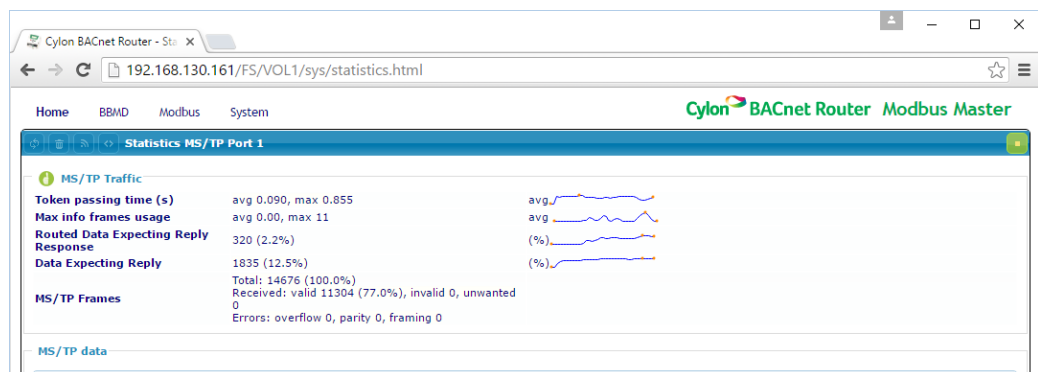


FCBR-5 The allowed maximum value for the MaxInfo Frames has been increased from 100 to 200.

FCBR-4 The MS/TP stastics embedded web page has been updated to include a traffic-level indication (based on the MS/TP average token-passing seen by the **CBR**). This indicates the load on the network. Steps should be taken to investigate and fix any congestion (heavy traffic) detected.

	(Green)	Light	$Traffic\ Level \leq 1\ s$
	(Orange)	Medium	$1\ s < Traffic\ Level \leq 2.5\ s$
	(Red)	Heavy	$2.5\ s < Traffic\ Level$

In addition, “sparkline” plots have been added that track the data on the web page each time the data is refreshed using the Refresh Data button:



Resolved Issues

B8179 An issue has been fixed where the **CBR** restarted when ‘timing out’ (disconnecting) many foreign registered devices at the same time.

B8210 An issue where a Modbus device was marked offline following a write to a register has been fixed. This could happen if the BACnet points were mapped to Modbus registers with gaps in their addresses and all the BACnet points were updated (written to).

B8271 An issue where the **CBR** could restart following a "who-is-all" on a large network (more than 300 devices) has been fixed.

- FCBR-2** **CBR** Modbus virtual devices no longer fail to send an “i-am” if the “who-is” request is a remote broadcast.
- FCBR-3** An issue where the **CBR** sometimes sent an out-of-sequence response on the MS/TP trunk has been fixed. (This issue caused the **CBR** to poll for master more often than necessary).

Customer Impact

Any customer who was affected by the resolved issues or who wishes to avail of any of the new User Interface features should upgrade to this version.